

COMUNE DI LATINA
PIANI DI RECUPERO DEL CENTRO URBANO
DELIBERA N. 585/2006 del 15-11-2006

Arch. F. Abbenda
 Arch. G. Caridi
 Arch. R. Coco
 Arch. P. Costanzo
 Arch. L. Guidi
 Arch. N. Guidi
 Arch. P.H. Guidi
 Arch. M. Palombi

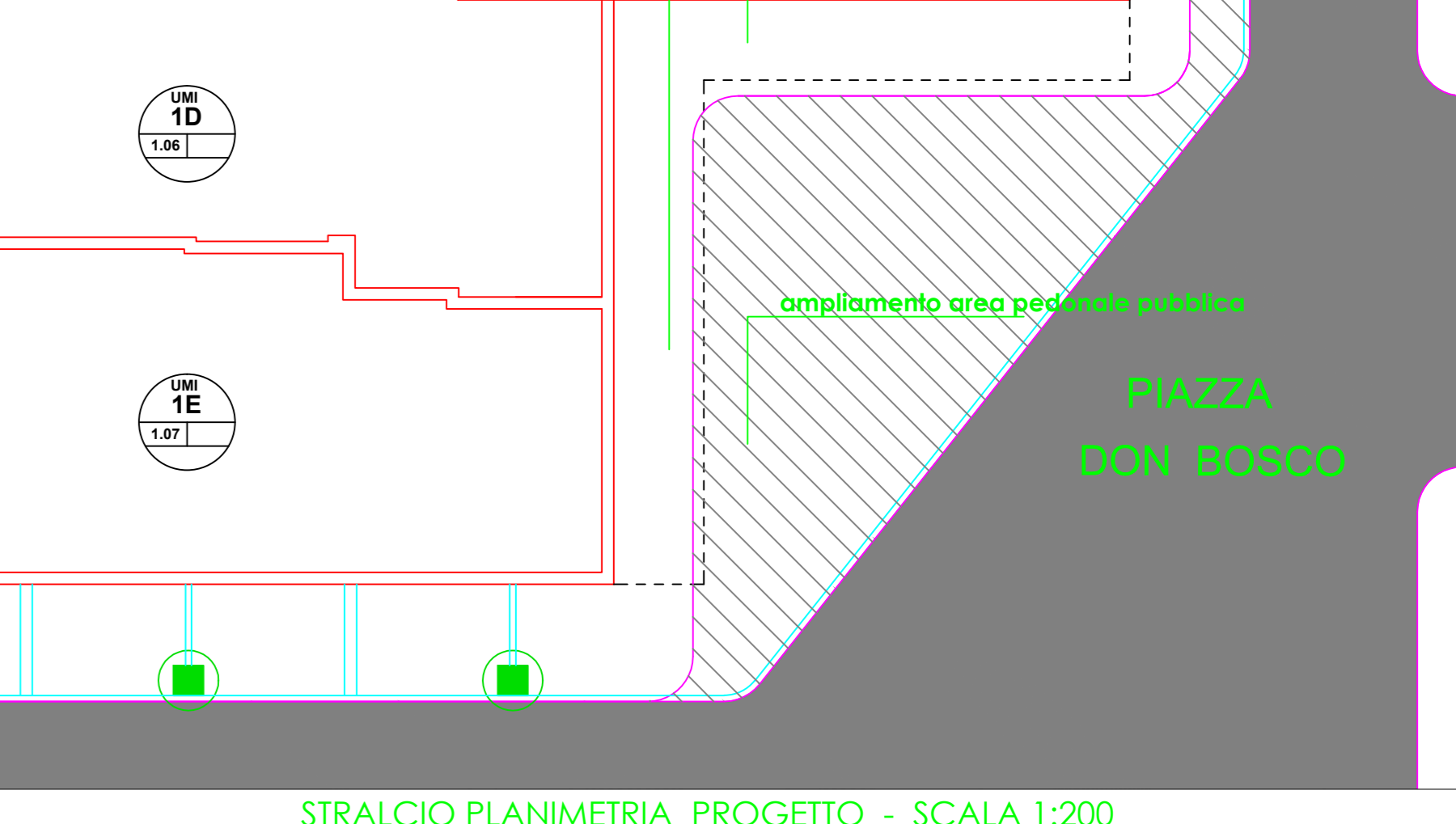
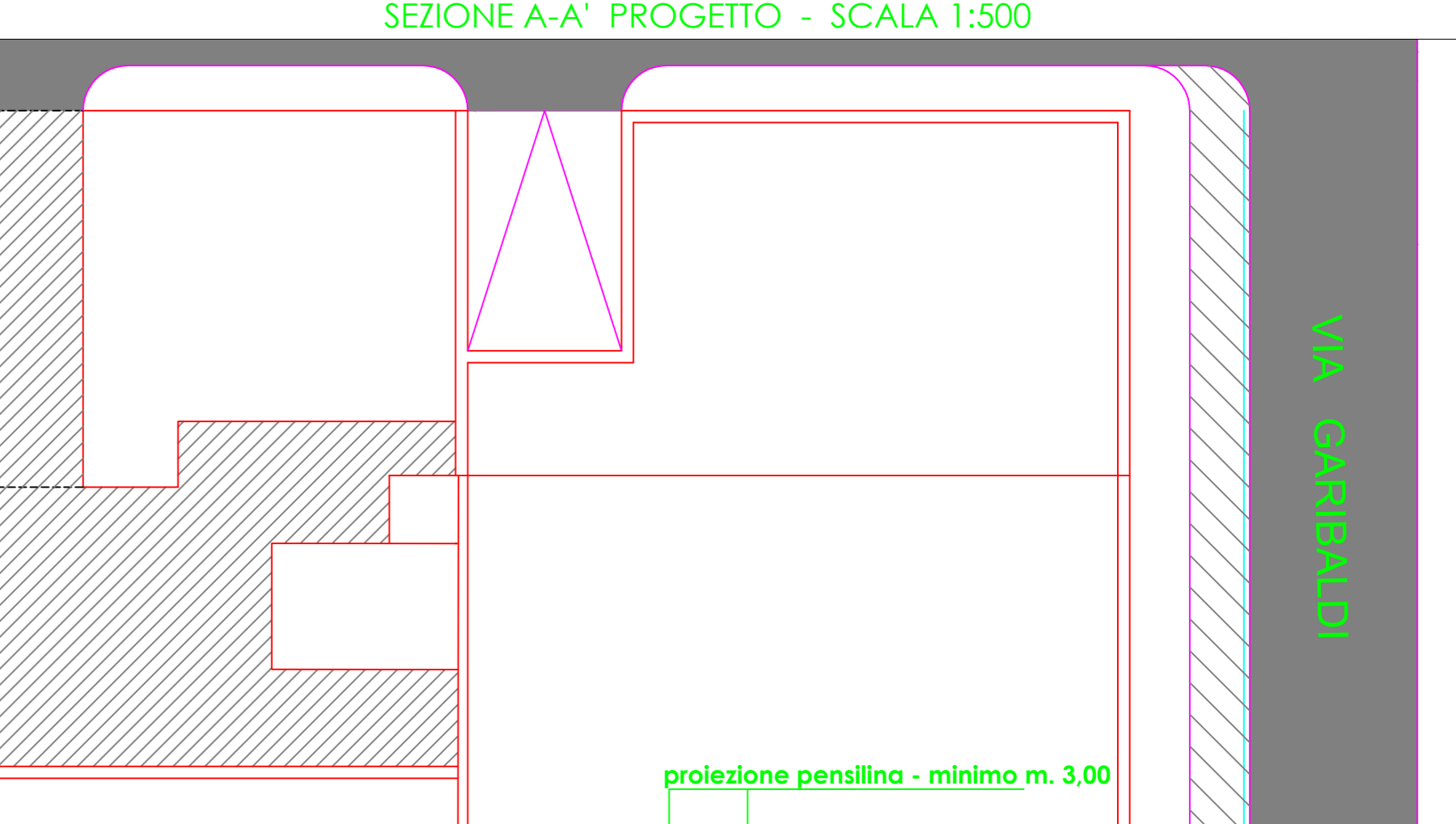
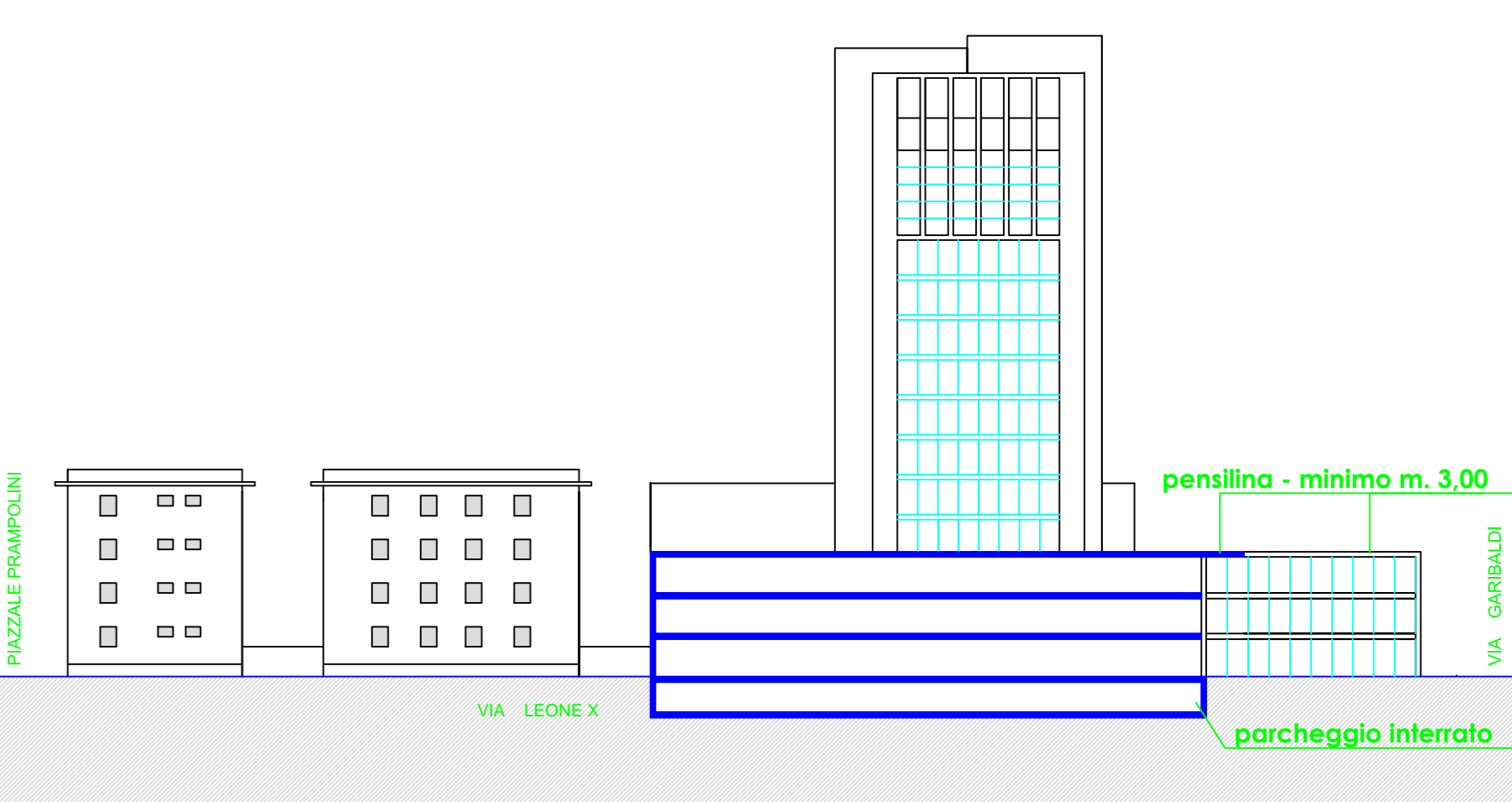
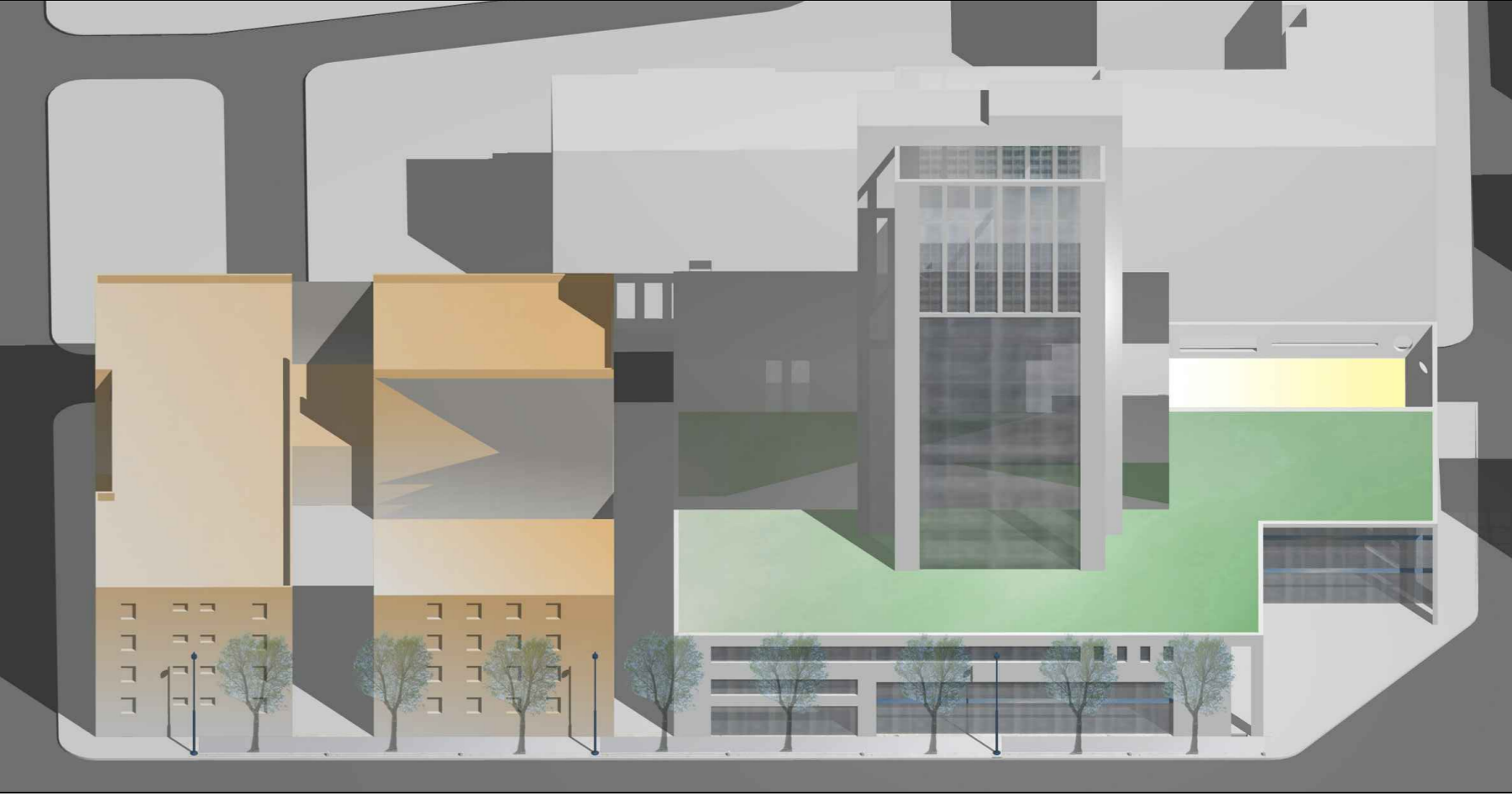
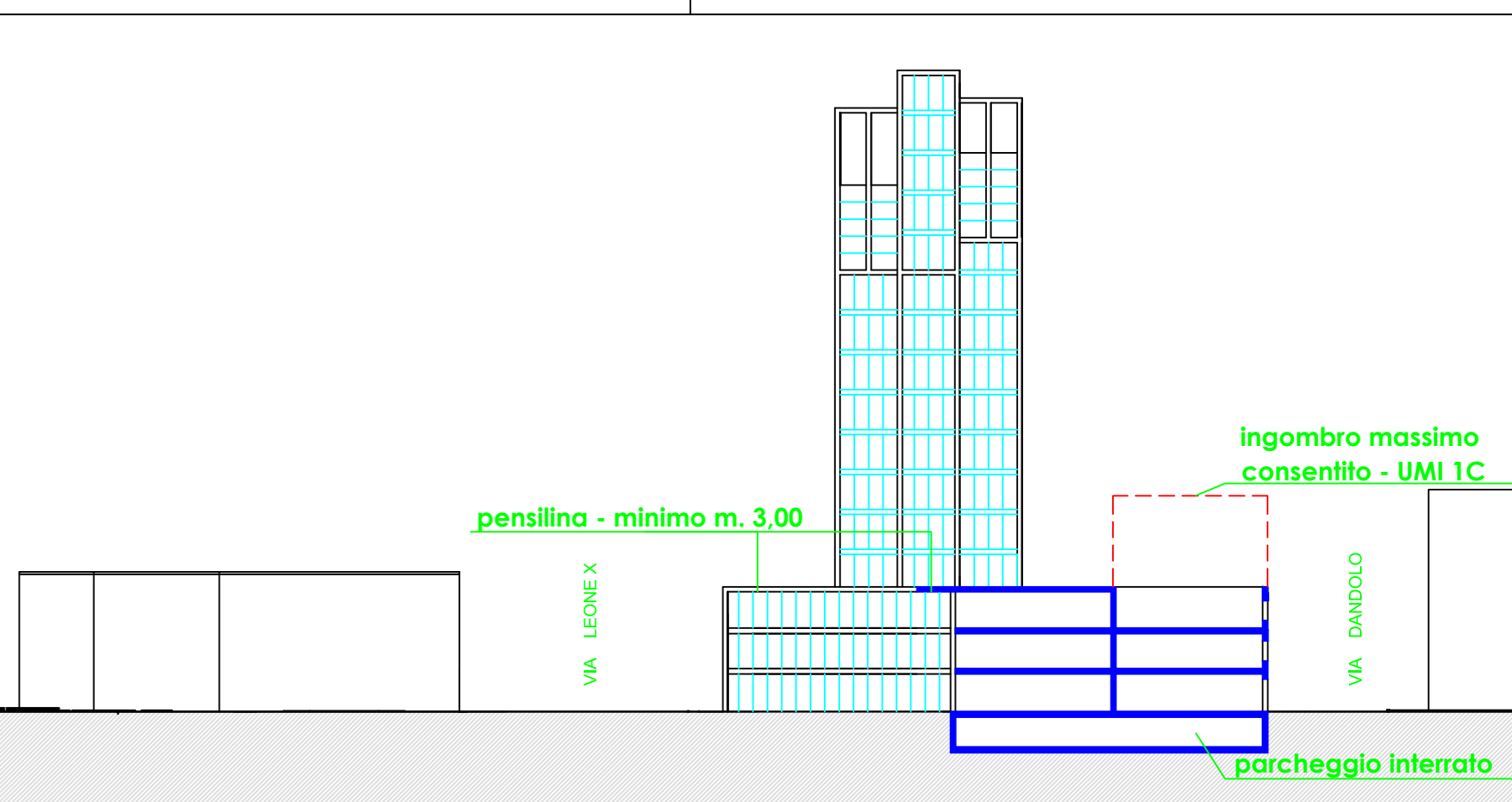
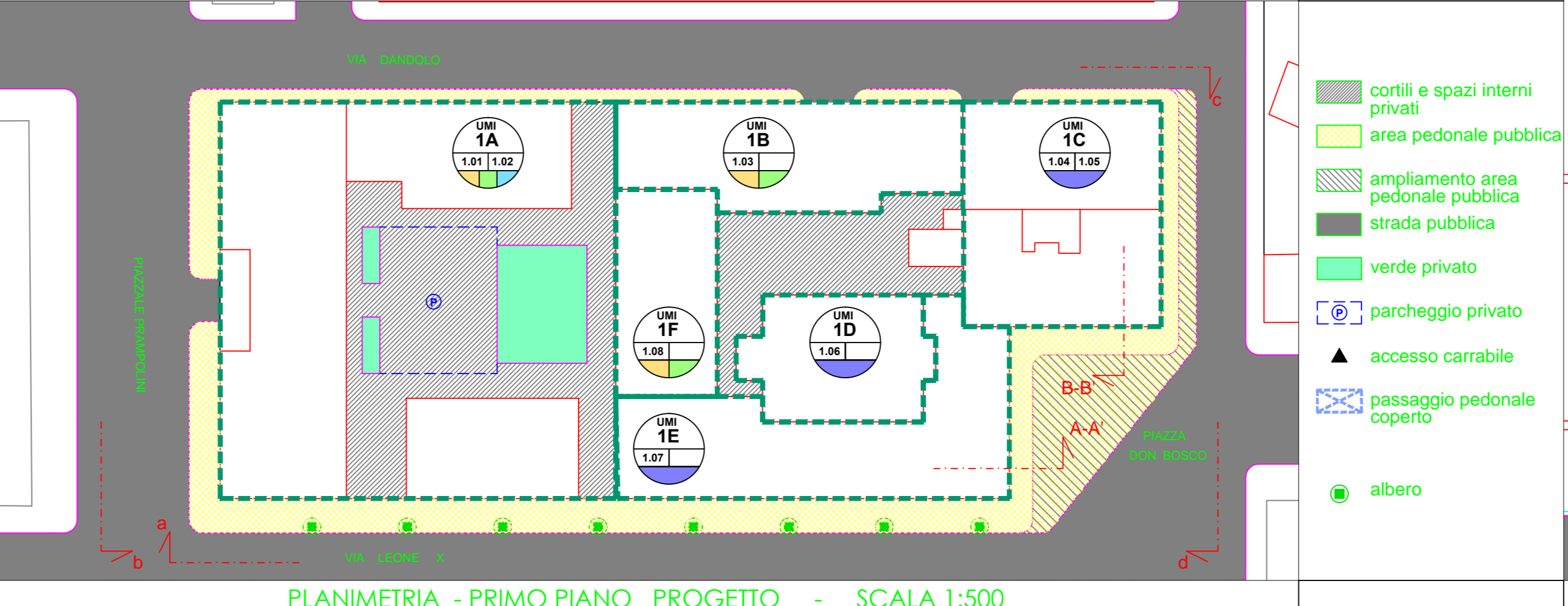
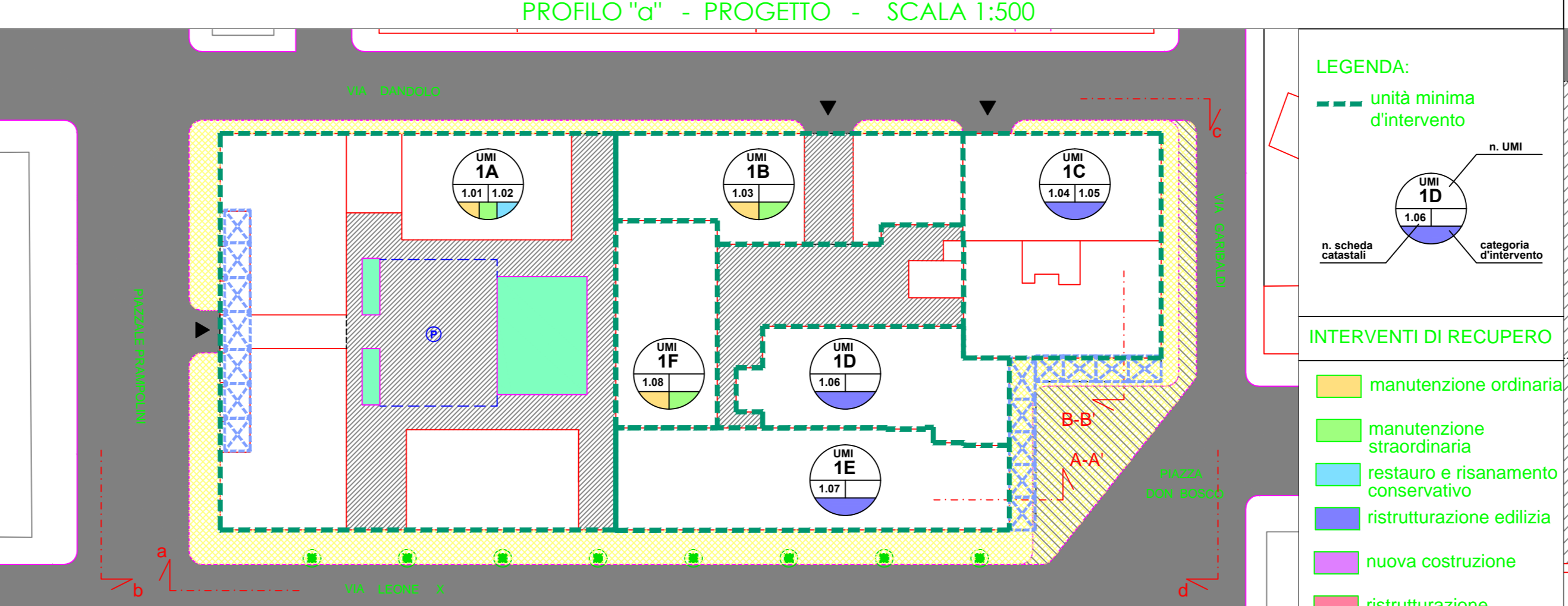
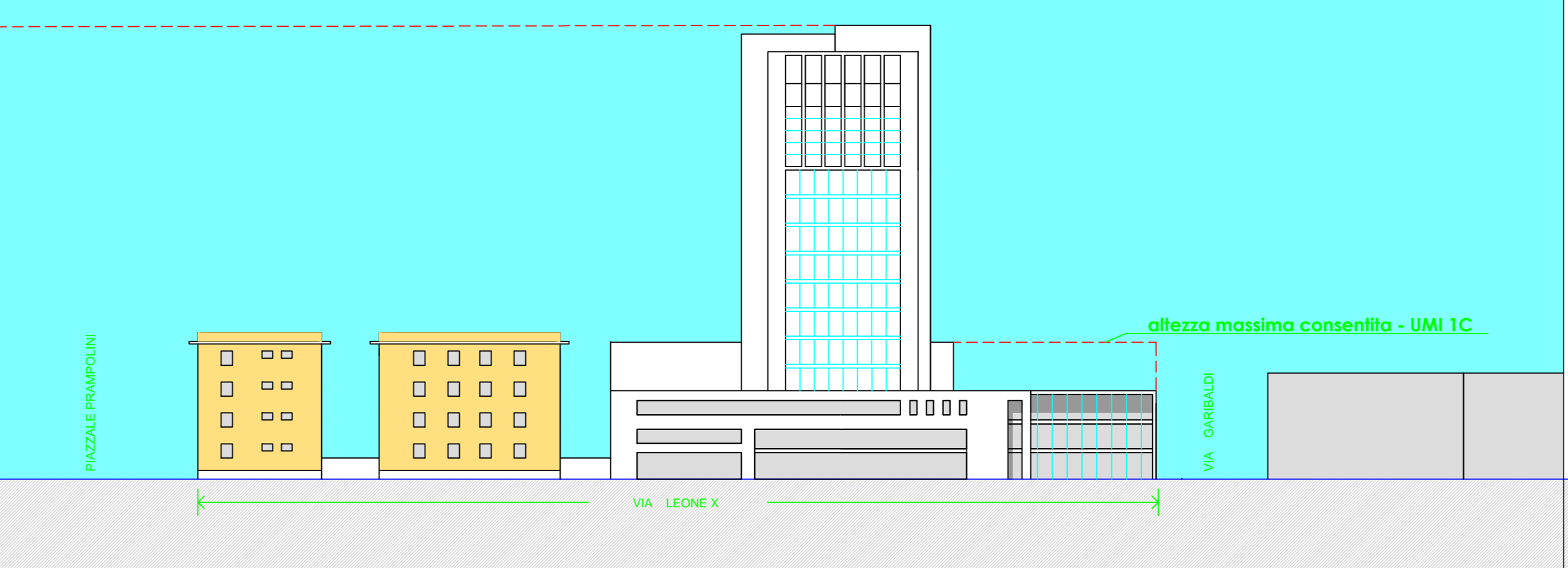
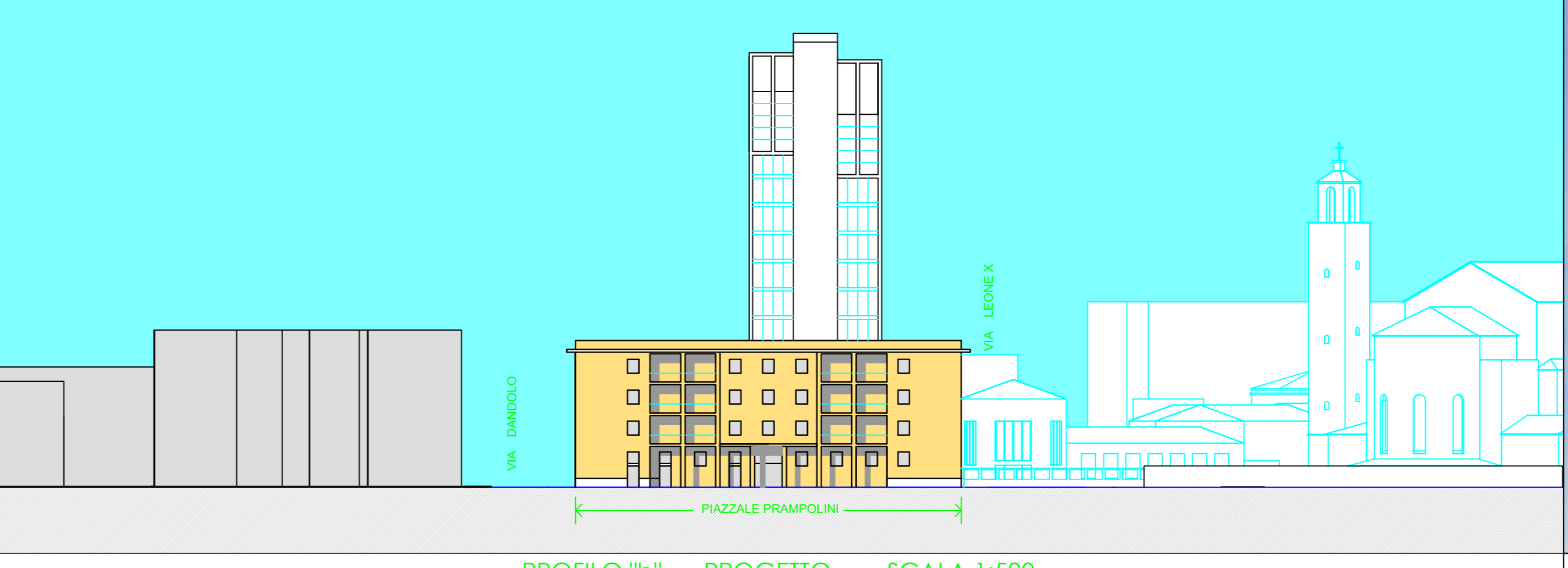
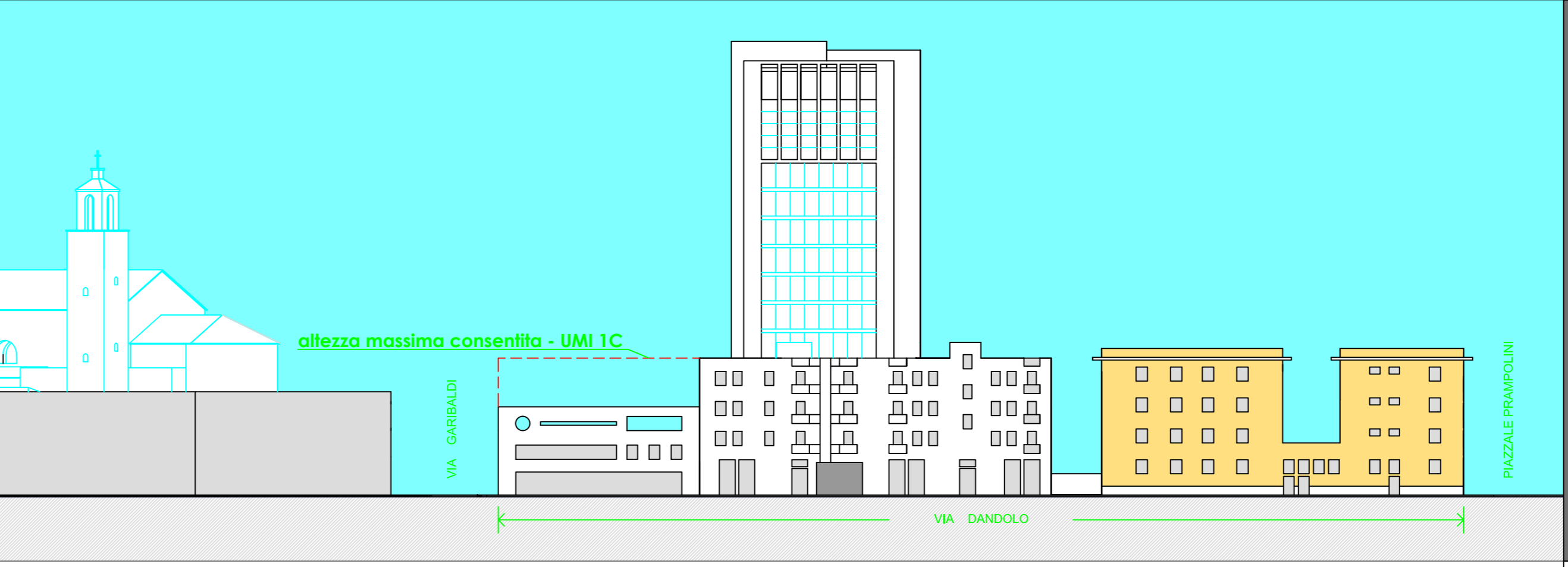
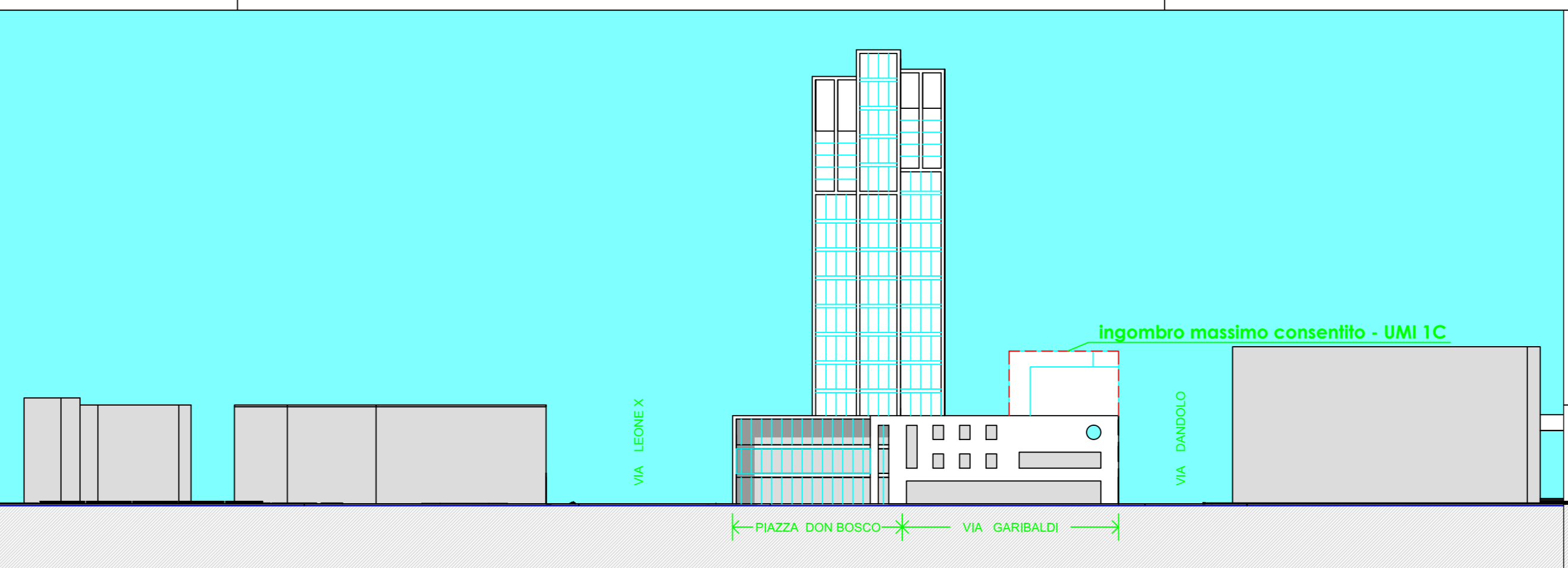
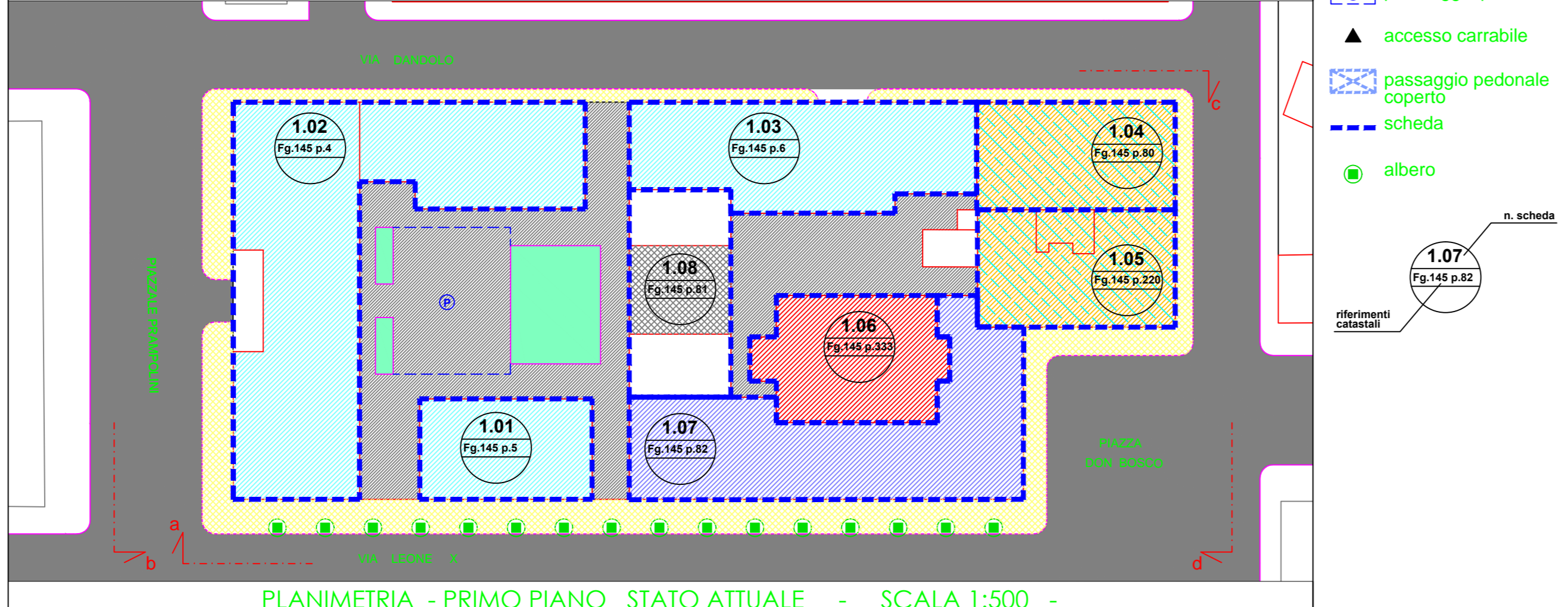
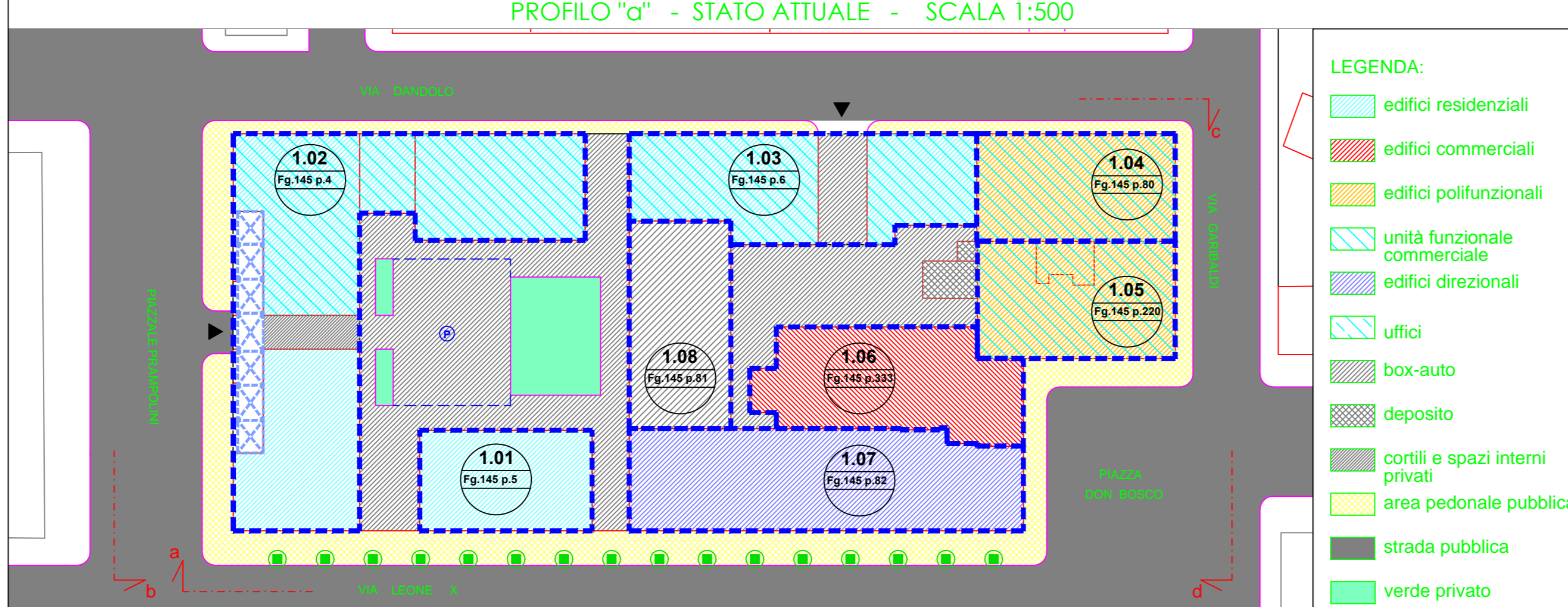
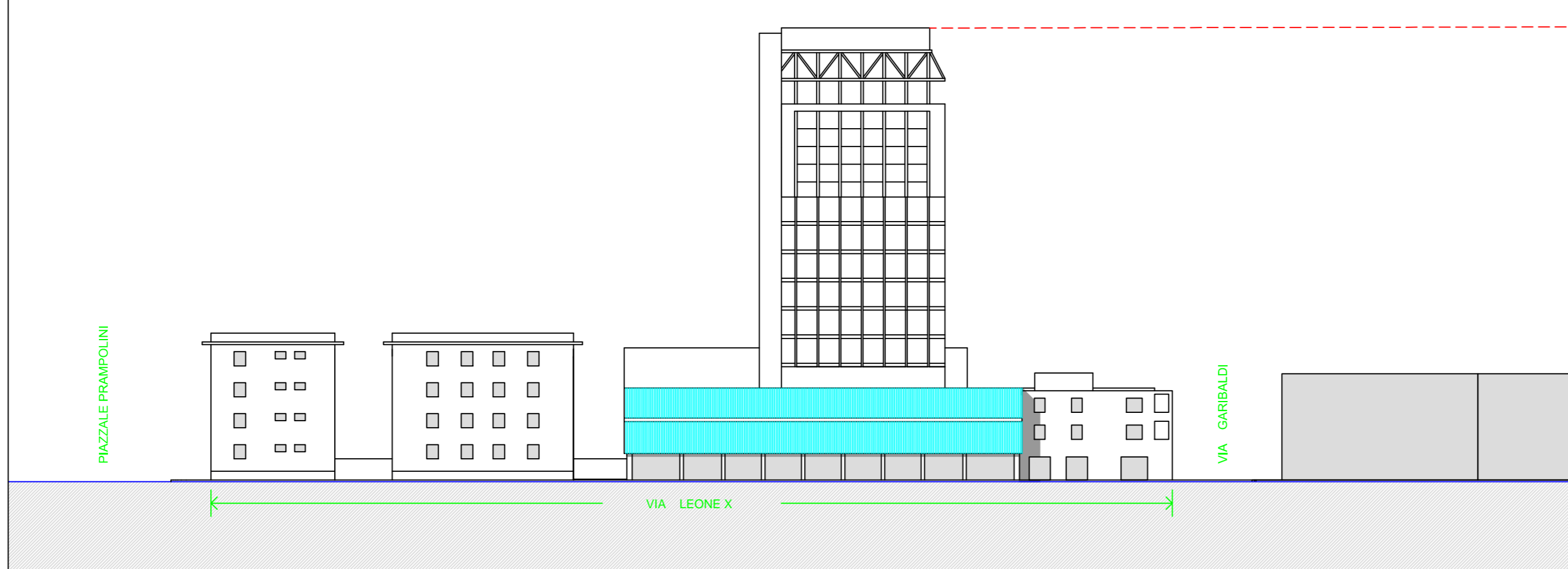
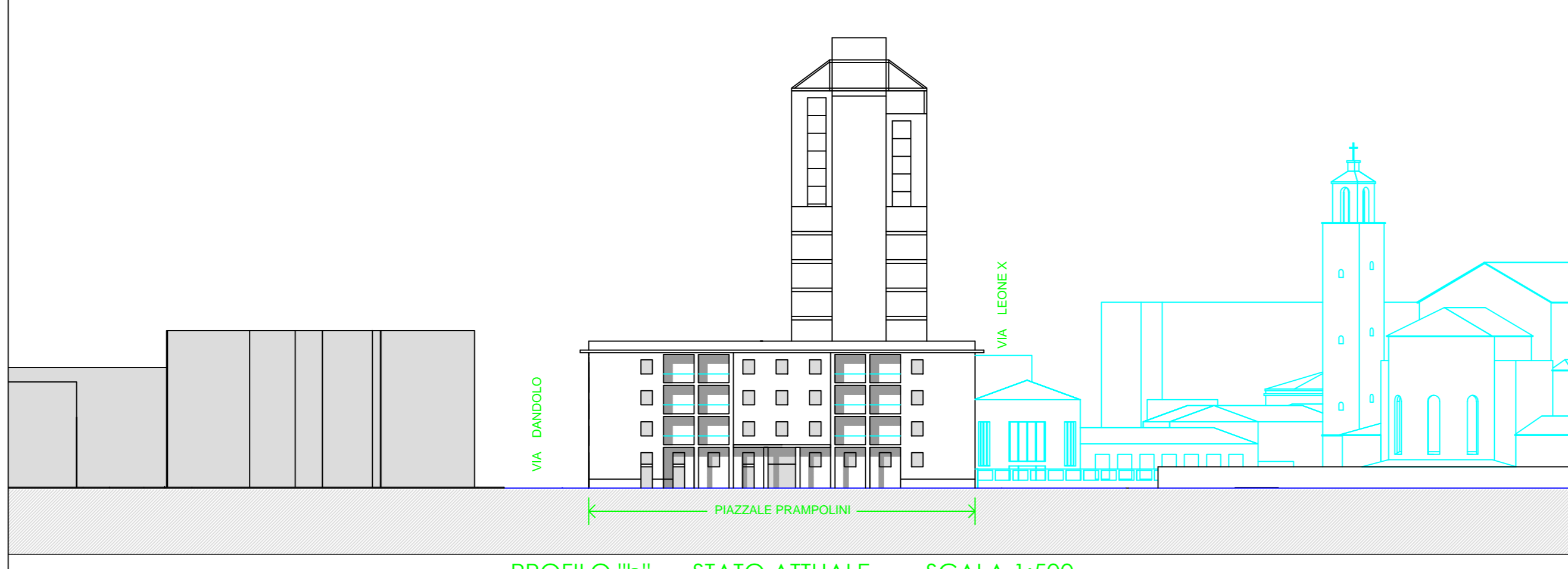
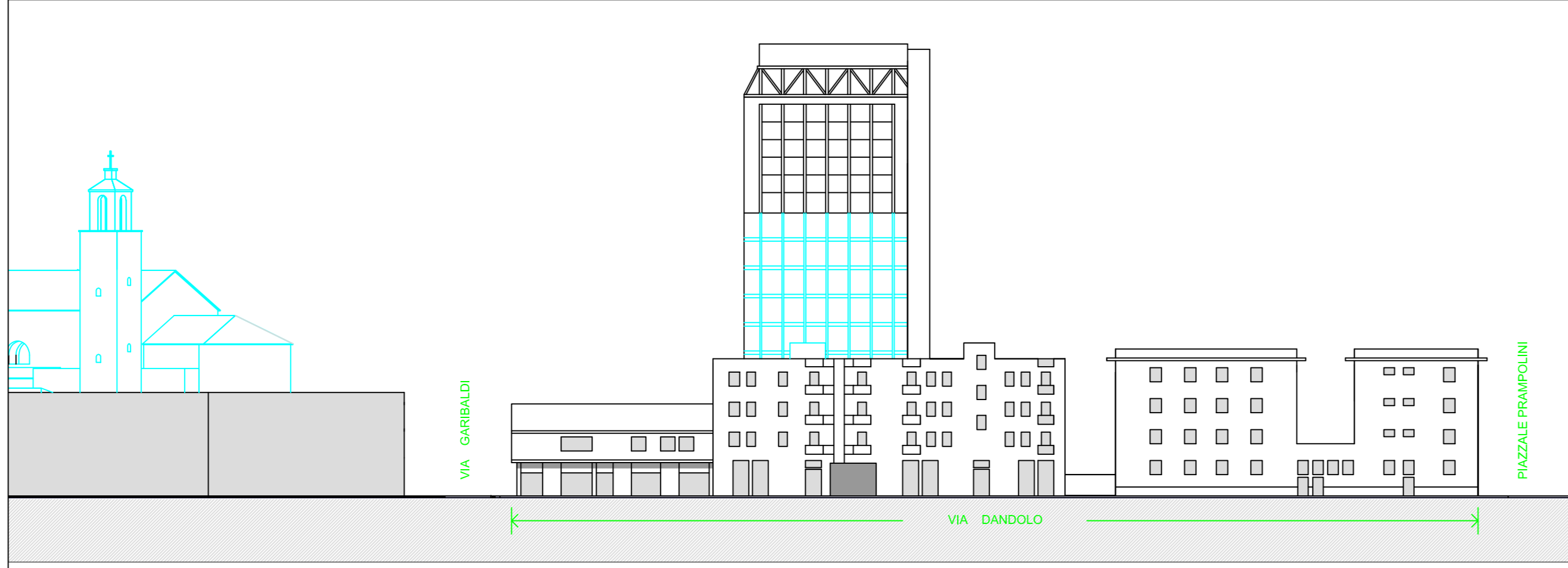
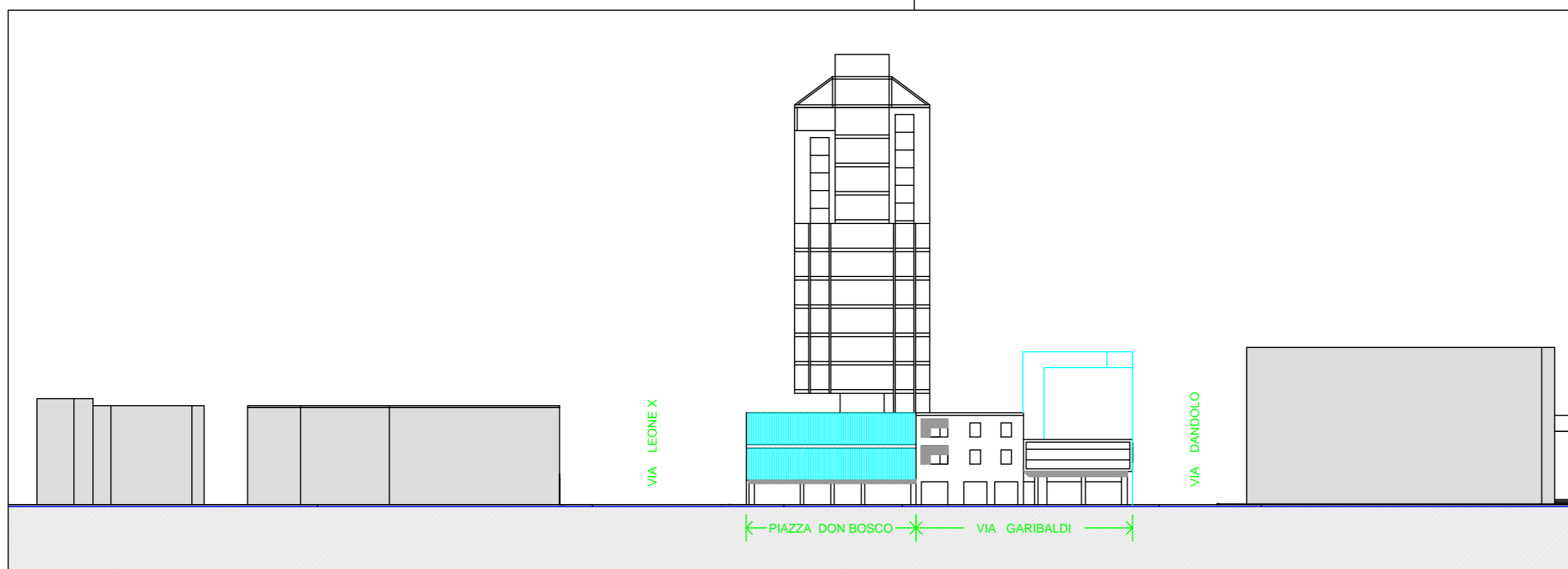
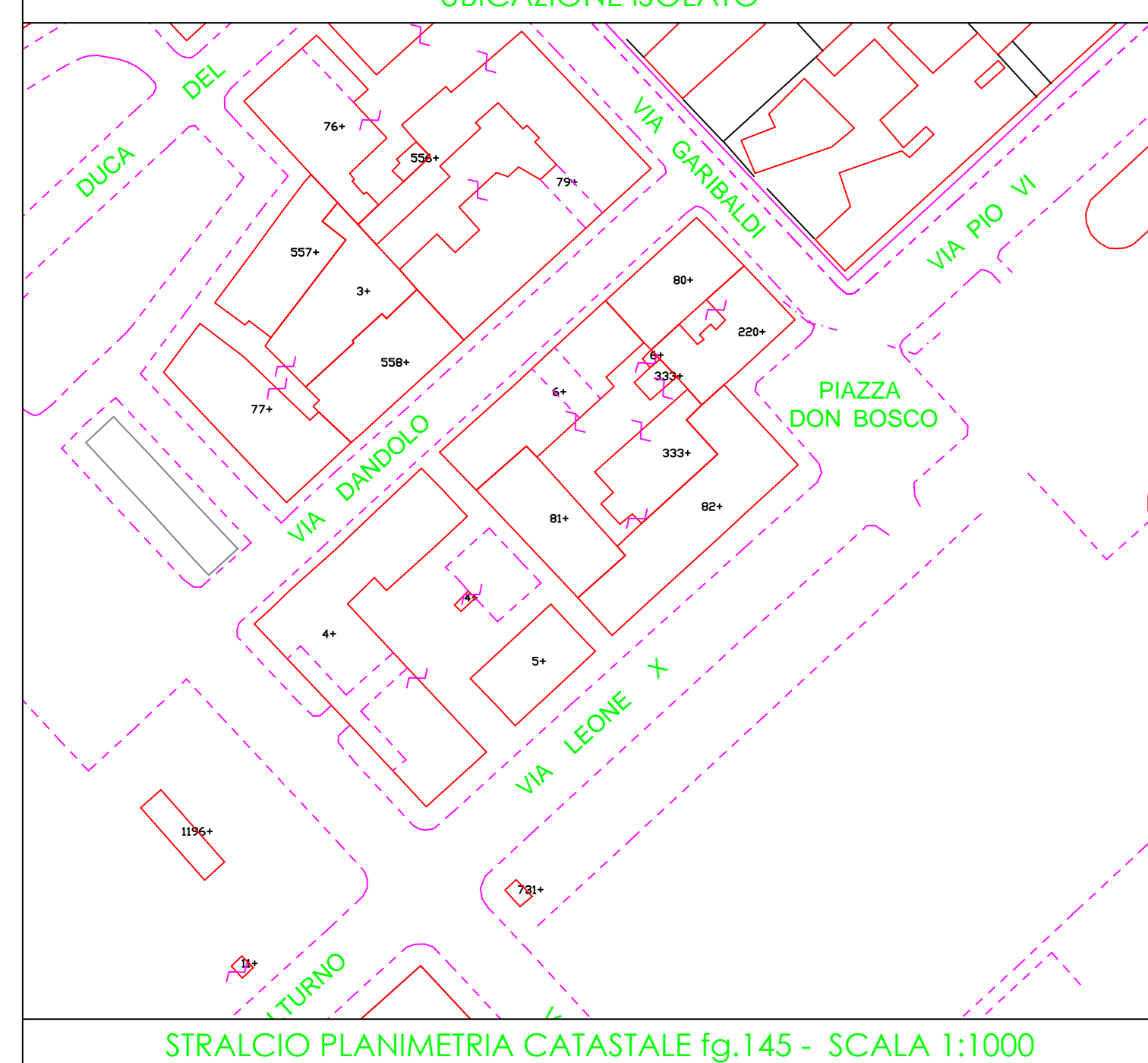
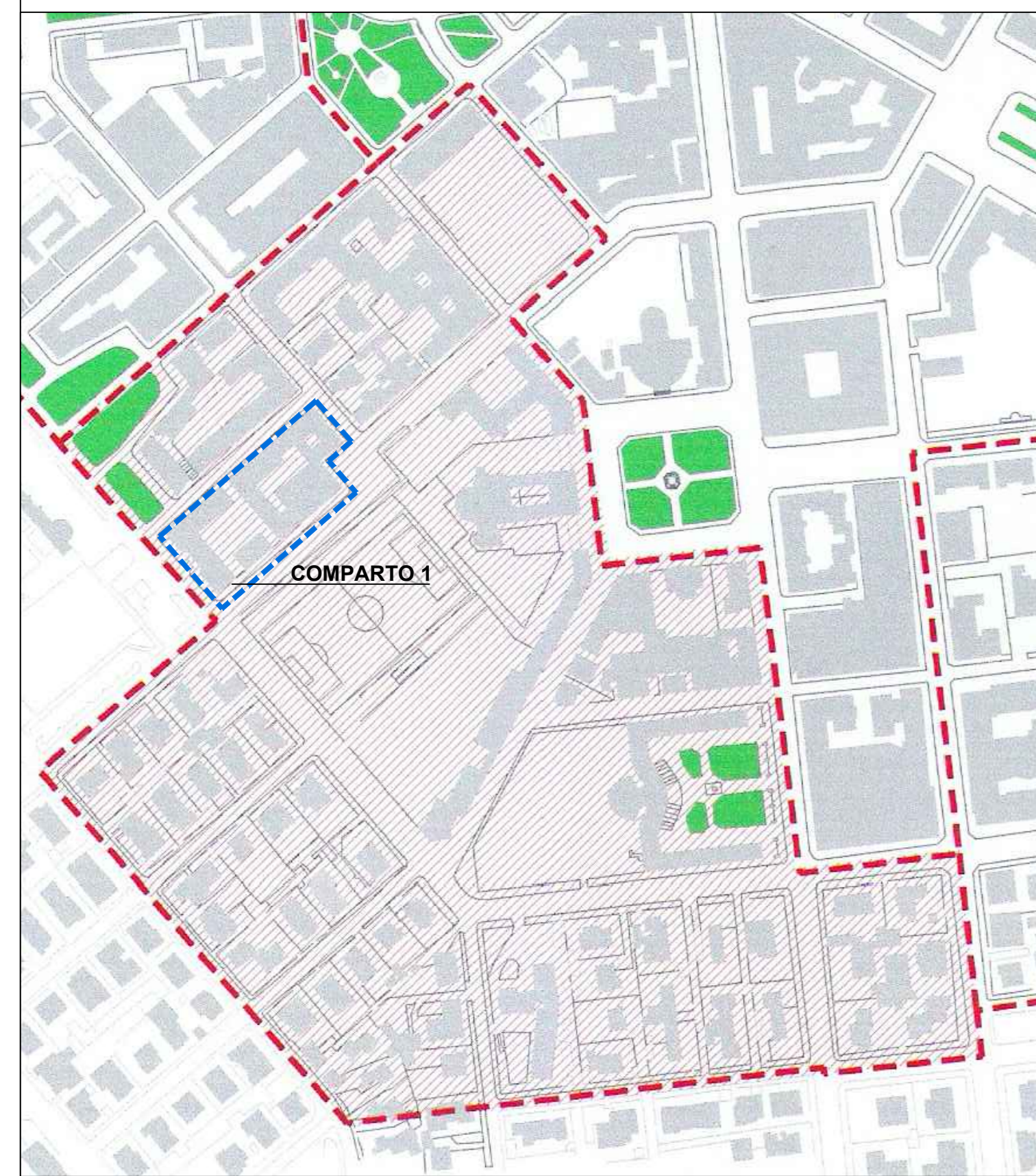
Arch. A. Lombardozi
 Arch. D. Marotta
 Ing. G. Orzi
 Arch. F. Romagnoli
 Arch. P. Vitoli
 Arch. M. Trabucco
 Arch. P. Zenobi

AMBITO SUD

COMPARTO 1
 progettisti:
ARCH. PAOLO COSTANZO **ARCH. PAOLO STEFANO ZENOBI**

ICE - CSE PIAZZA 56517 64294 PIAZZALE GORRA 1.2 - 04100 LATINA
 tel. / fax: 0773 / 47315 - e-mail: pcostanzo@fastwebnet.it tel. / fax: 0773 / 472674 - e-mail: paolo.zenobi@libero.it

TAV. 2
 progetto
 luglio 2008



- LEGENDA:**
- edifici residenziali
 - edifici commerciali
 - edifici polifunzionali
 - unità funzionale commerciale
 - edifici direzionali
 - uffici
 - box-auto
 - deposito
 - cortili e spazi interni privati
 - area pedonale pubblica
 - strada pubblica
 - verde privato
 - parcheggio privato
 - accesso carrabile
 - passaggio pedonale coperto
 - schada
 - albero

- LEGENDA:**
- unità minima d'intervento
 - manutenzione ordinaria
 - manutenzione straordinaria
 - restauro e risanamento conservativo
 - ristrutturazione edilizia
 - nuova costruzione
 - ristrutturazione urbanistica
 - cortili e spazi interni privati
 - area pedonale pubblica
 - ampliamento area pedonale pubblica
 - strada pubblica
 - verde privato
 - parcheggio privato
 - passaggio pedonale coperto
 - accesso carrabile
 - passaggio pedonale coperto
 - albero